

ΕΞΙΣΟ

European University



We are

EEIISO

**European
University**



The European
Universities Alliance that
will transform engineering
education and society



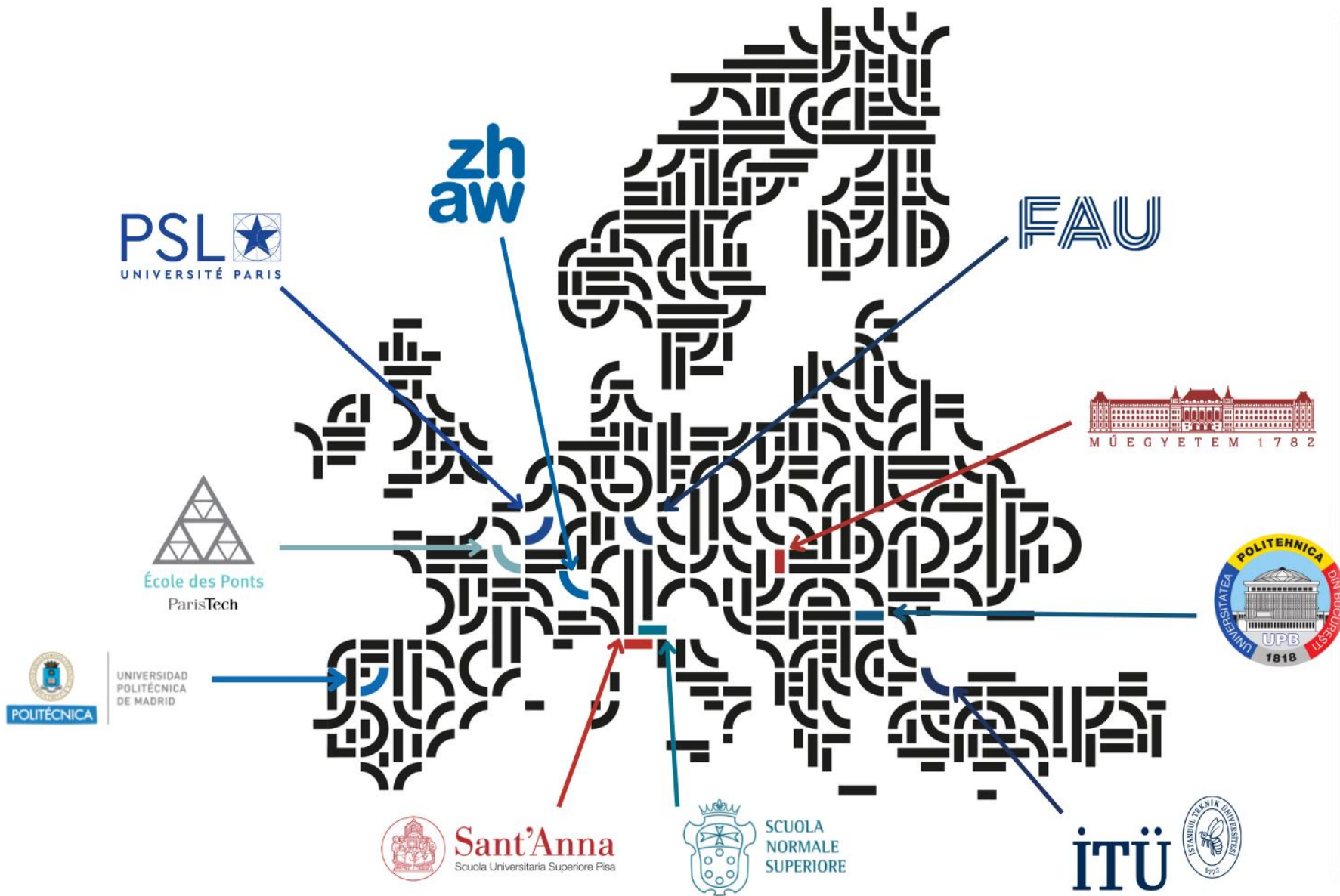
what is EELISA?

The **European Engineering Learning Innovation and Science Alliance (EELISA)** is the first alliance of Higher Education Institutions from different countries in Europe meant to define and implement a **common model of *European engineer*** rooted in society.

EELISA's acronym also pays tribute to women engineers through the memory of **Elisa Leonida Zamfirescu** (1887-1973), one of the very first women to obtain an engineering degree in the world.



European Engineering Learning Innovation Science Alliance



EELISA IN NUMBERS

8 Countries

10 Universities

194,000 Students

18,500 Faculty

12,000 Staff

46 Communities

34 Associate Partners

1,341 EELISA Credentials

IN ASSOCIATION WITH



European Network for Accreditation of Engineering Education

CO-FUNDED BY



Co-funded by the Erasmus+ Programme of the European Union

MEET YOUR NEW CAMPUS:

“THE EELISA CAMPUS”



Budapesti Műszaki és
Gazdaságtudományi
Egyetem



École des Ponts ParisTech



Friedrich-Alexander-
Universität Erlangen-
Nürnberg



İstanbul Teknik Üniversitesi



Universitatea Politehnica din
București



Université Paris Sciences et
Lettres



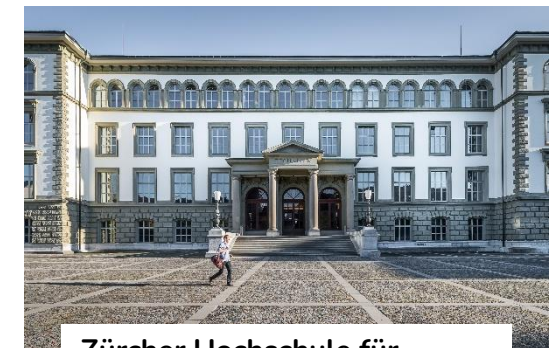
Universidad Politécnica de
Madrid



Scuola Normale Superiore



Scuola Superiore Sant'Anna



Zürcher Hochschule für
Angewandte Wissenschaften



ERISSO'S mission



To transform **European higher education into the seed for a future in which society masters global challenges** with smart and sustainable solutions enabled by engineering.



EELISA'S mission

EELISA aims to **transform European higher education** while **strengthening links between engineering and society** by:

Re-inventing the **“European engineer”**

Democratizing **engineering education**

Evolving **interdisciplinary** engineering learning

Encouraging **knowledge, skills and technology transfer**

Fostering **inclusiveness and diversity**

Making a real impact on society following the **2030 Agenda for Sustainable Development** and the **SDGs**

EELISA'S mission into practice

1

**Interdisciplinary learning,
multi-actor collaboration
and sustainable solutions
to real-world challenges**



EELISA
communities

2

**EELISA Supplement
EELISA Credential
EELISA Degree and the
EELISA European Engineer**



EELISA
recognition

3

**Joint research, innovation and
entrepreneurship strategies,
actions, mobility, shared
facilities and structures**



EELISA
innovate
EELISA
unfolds

EELISA's mission into practice

1

**Interdisciplinary learning,
multi-actor collaboration
and sustainable solutions
to real-world challenges**



EELISA
communities

2

**EELISA Supplement
EELISA Credential
EELISA Degree and the
EELISA European Engineer**



EELISA recognition

3

**Joint research, innovation and
entrepreneurship strategies,
actions, mobility, shared
facilities and structures**

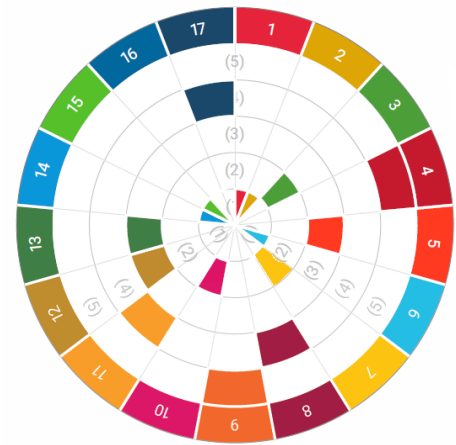


EELISA innovates
EELISA unfolds



EELISA Communities: Key figures

46 Communities	297 activities
1341 Credentials	2 Joint Calls



Density of EELISA Communities by SDGs addressed

THE LIVING ECOSYSTEM OF EELISA COMMUNITIES
 Problem owners, stakeholders, professionals and entire universities are members of EELISA communities designed to tackle social challenges with engineering solutions that are set up from multidisciplinary perspectives.

EEISO Community Platform

Find your community

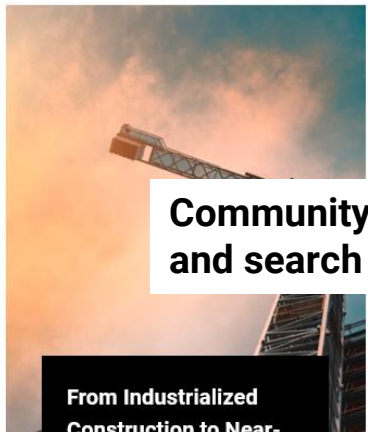
Search communities



- SDG 9 – Industry, Innovation & Infrastructure
- SDG 1 – No poverty
- SDG 10 – Reduced Inequalities
- SDG 11 – Sustainable Cities and Communities
- SDG 13 – Climate Action
- SDG 14 – Life Below Water
- SDG 15 – Life on Land
- SDG 16 – Peace, Justice & Strong Institutions
- SDG 3 – Good Health & Well-Being
- SDG 4 – Quality Education
- SDG 5 – Gender Equality
- SDG 6 – Clean Water & Sanitation



Engineering and Architecture in response to societal challenges, cultural heritage and common European identity (HEAR-European)



From Industrialized Construction to Near-Industrial Construction

Community showcase and search component

Networking component

Join the conversation on Discourse

Discuss with other community members and develop new ideas from home or wherever you are.

Open Discourse Board

Activity submission and showcase component

Submit your activity today

Discuss with other community members and develop new ideas from home or wherever you are.

Open activity application

EELISA's mission into practice

1

Interdisciplinary learning,
multi-actor collaboration
and sustainable solutions
to real-world challenges



EELISA
communities

2

**EELISA Supplement
EELISA Credential
EELISA Degree and the
EELISA European Engineer**



EELISA recognition

3

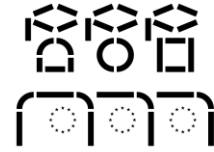
Joint research, innovation and
entrepreneurship strategies,
actions, mobility, shared
facilities and structures



EELISA innovates
EELISA unfolds



EELISA Recognition



EELISA Supplement

Supplement that contributes to the **European commitment of the students through mobility** abroad, EELISA courses, involvement in Communities, etc.

EELISA credential

Acknowledges **students' engagement within an EELISA Community** and their contribution to solving societal challenges, as **committed professionals ready to transform knowledge into action**

EELISA degree

Multisite degrees based on a **common internal quality assurance mechanism for EELISA activities** that will set the mark for demonstrating **what a new European Engineer is**



The EELISA Credential

Signed by the EELISA President on behalf of the nine Rectors, Directors, and President of the EELISA partner institutions, the EELISA Credential is a unique recognition system that aims to become a benchmark for public institutions, companies, and civil society organizations when looking for **committed professionals ready to transform knowledge into action.**



EELISA President, Mr. Dale Martin, hands an EELISA Credential to EELISA student Flavius Dragoi during the EELISA Achievements Celebration Event in Budapest (September, 2022)

ISSUED TO EELISA Credential #: 0001230

First Name: ZAMFIRESCU
Last Name: ELISA LEONIDA
Institution: Universitatea Politehnica din Bucuresti (UPB)

SUSTAINABLE DEVELOPMENT GOALS

Impact level of the EELISA Credential holder

Explanation of impact levels:

- (1) DISCOVERY - Activities aiming at networking, generating community and generating awareness.
- (2) KNOWLEDGE - Knowledge and thinking skills necessary to better understand the SDGs and the challenges in achieving it.
- (3) OUTREACH - Not all students are able to learn to collaborate, negotiate and communicate to promote the SDGs as well as self-reflection skills, values, attitudes and motivations that enable learners to envision opportunities.
- (4) ACTION - Activities aiming at developing behavioural competencies to produce solutions for fulfilling the mission of the community.
- (5) TRANSFORMATION - Impactful and transformational activities with demonstrable significant KPIs.

EELISA European University

Co-funded by the Erasmus+ Programme of the European Union



The EELISA Degree and the EELISA European Engineer Profile

EELISA aims to develop a **common model of European engineer profile rooted in society**, focused on increased inclusiveness, cross-disciplinarity and commitment. Such a profile includes **high-level technical and scientific competencies** and encompasses **environmental, social and multicultural skills** in order to address the new challenges of a global society and the expectations of companies

1. SKILLS

A student-centered education with disciplinary broadening and high-level of scientific, theoretical and digital skills.

Here, training in research methodologies and relevant literature is key to help evaluate the data or processes using state of art methods.

2. SUSTAINABILITY

A philosophy of work and social life while fostering responsibility of engineers.

European engineers will need to carry out a critical study of the risks that pertain to the development of new technologies, and consider the entire life cycle of products and services they design and produce.

3. INTERCULTURALISM

Mobility opportunities within EELISA and a network of European engineers with shared values.

By being exposed to different professors, university environments and cultures, students will become more aware of different societal issues, ethical problems and cultural dispositions.

4. CRITICAL THINKING

Practical and applied knowledge.

Engineers will be exposed to economic, organizational and managerial issues, requiring training related to communication skills, decision-making and independent learning to integrate the views of multiple stakeholders into their decision and creative processes.

**The four pillars of
the EELISA European
Engineer Profile**

EELISA's mission into practice

1

Interdisciplinary learning,
multi-actor collaboration
and sustainable solutions
to real-world challenges



EELISA
communities

2

EELISA Supplement
EELISA Credential
EELISA Degree and the
EELISA European Engineer



EELISA
recognition

3

Joint research, innovation and
entrepreneurship strategies,
actions, mobility, shared
facilities and structures

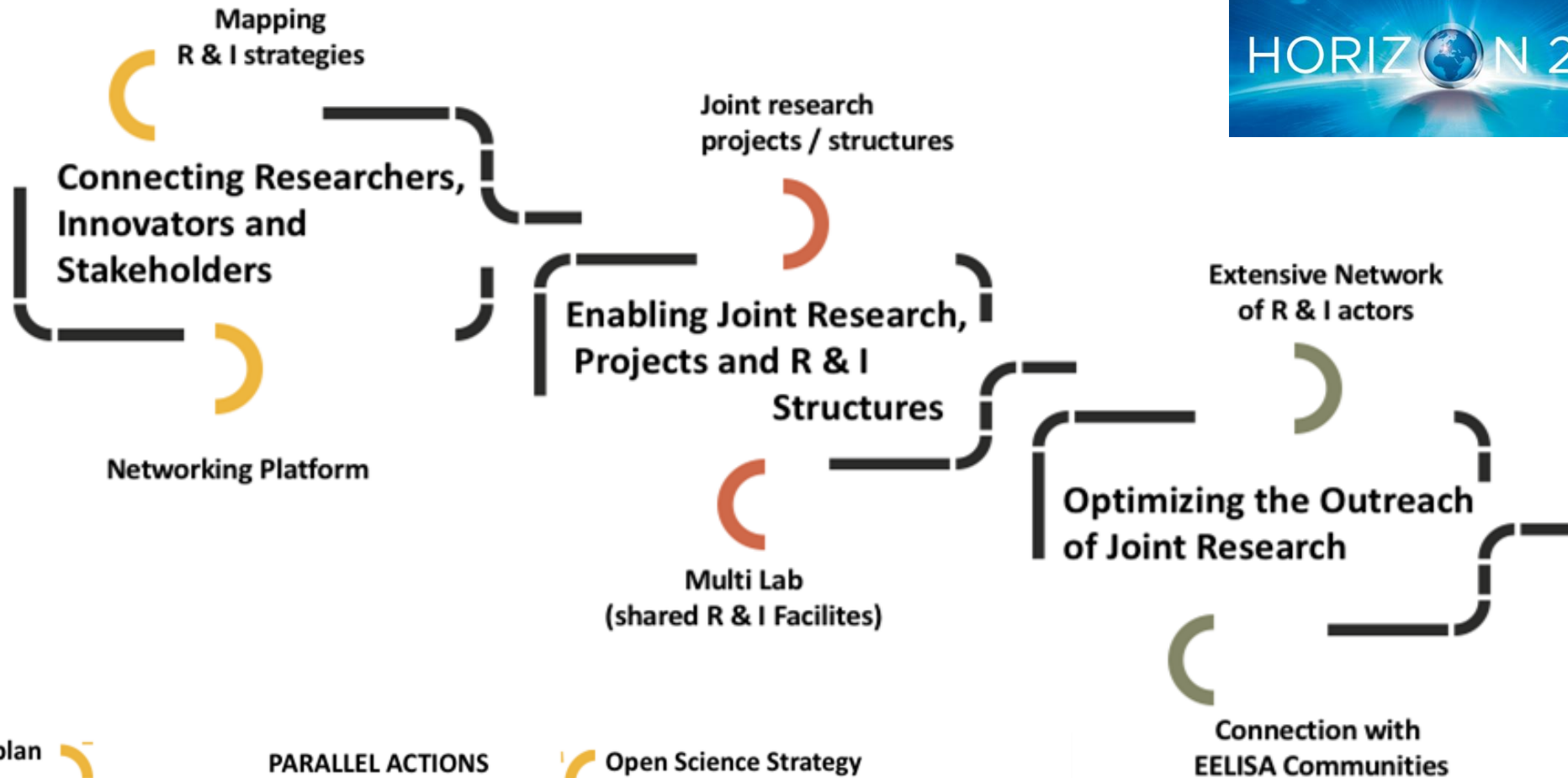


EELISA
innovation
EELISA
unfolds



EELISA INNOVation and COmmon REsearch Strategy (EELISA innovoré)

brings a new level of cooperation that will transform the R&I dimension of the alliance



Open Science RRI Evaluation Communication Identification of barriers

Recommendations for policy makers

Connection with other European Universities



Co-funded by the Horizon 2020 programme of the European Union



Unlocking Full innOvation capacity buiLDing and entrepreneurship (EELISSA unfolds)



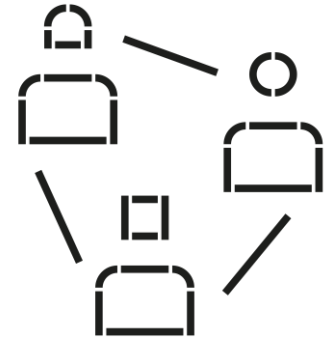
will contribute to the transformation of our higher education institutions into key players of the entrepreneurial and innovation ecosystem

Students, academics, researchers, staff and key industry players such as start-ups, will be invited to engage in:

- innovative student engagement activities
- new collaborations with external partners looking for co-creation of high-impact, social and economic opportunities
- enhanced structures for creating start-ups and venture builders for spin-offs
- specific programs for innovation-driven research
- the development of an entrepreneurial curricula based on credentials
- the development of advanced training and mentoring schemes



EELISA avenues for collaboration



- Access a pool of well-trained and deeply committed people: EELISA students
- Solve challenges with and through EELISA Communities
- Benefit from the **prestige and recognition** connected to a European University and **expand your societal impact** by connecting to its mission, vision and values
- Have a direct access to a European network of universities of excellence
- Access EELISA state-of-the art infrastructures and talents

To be in the EELISA loop:

 Follow @eelisa_eu on social media

@ Check the web: www.eelisa.eu

 Subscribe to EELISA Newsletter.

thank you!

thank

you

Learn more: www.eelisa.eu



EELISA has received funding from the European Union's Erasmus+ programme under GA No. 101004081 / EELISA-InnoCORE has received funding from the European Union's Horizon 2020 R & I programme under GA No. 101035811 / EELISA Unfolds is co-funded by the European Union and EIT Digital